

WENTWORTH LAKE PARK

CONCEPT
REFINEMENT
PRESENTATION

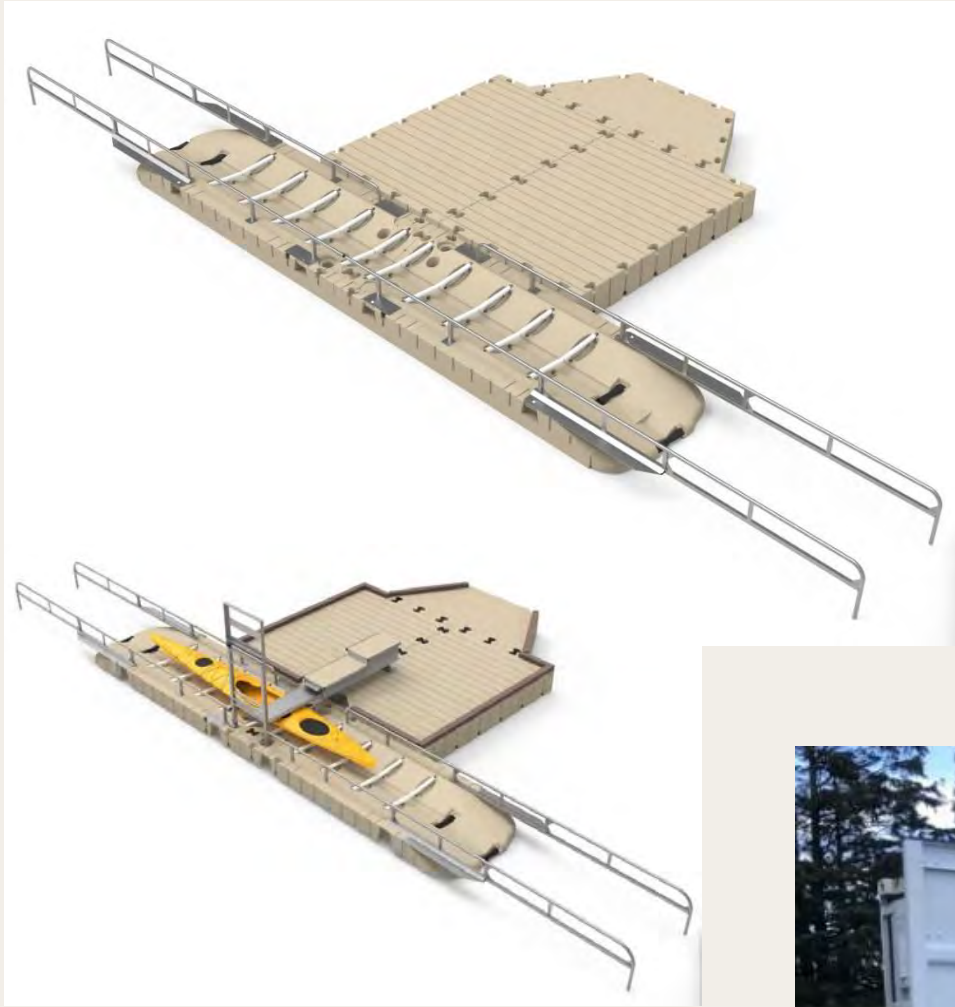


BOAT LAUNCH



BOAT LAUNCH

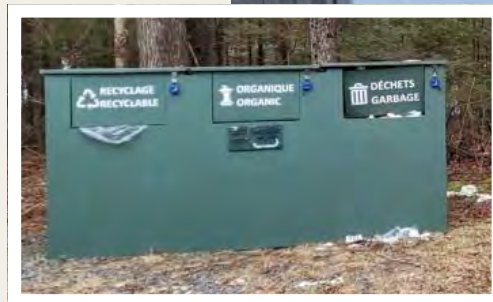




EZ Launch
Available from Eagle Beach Contractors
(Hammonds Plains, NS)



Ocean Playgrounds
(Kentville, NS)



PICNIC AREA



Shipping container

Accessible washroom with change table

Recycling station

Hammock area

Trailhead signage

Existing trail



Picnic tables

New trail to floating dock

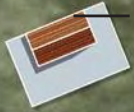
Bike racks with branding

Picnic shelter



Picnic tables

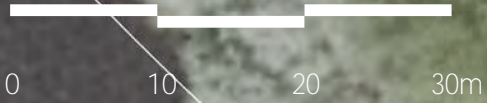
Accessible picnic shelter

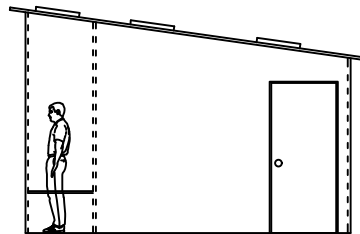
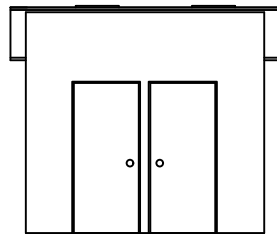
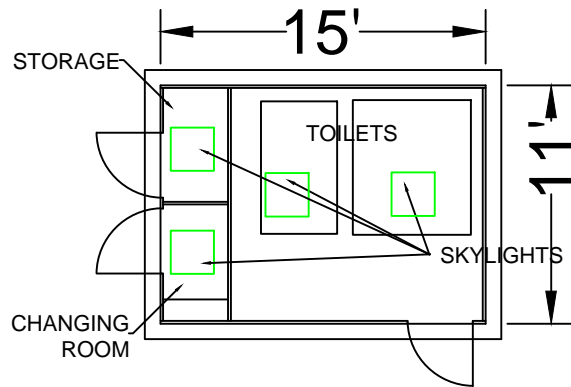


Picnic shelter

Picnic tables

Selective thinning to improve lake view





Building is 15 feet by 11 feet.
Shed roof.
Building is constructed with 100% recycled PET core

Pricing Includes 3- 36" door with hardware , 4 skylights
Venting for 2 bathrooms, Building installed and painted onsite,

Paint color to customers requirement.

Washroom laminated to owner supplied slab

\$27 698.00 + Applicable taxes

FOREVER SHED BY JD COMPOSITES



Client: **Municipalite de Clare**

Drawn By:
D. Saulnier

Rev: 0

Project: BATHROOMS/CHANGE ROOM
WENTWORTH LAKE

Scale : nts

DWG NO:

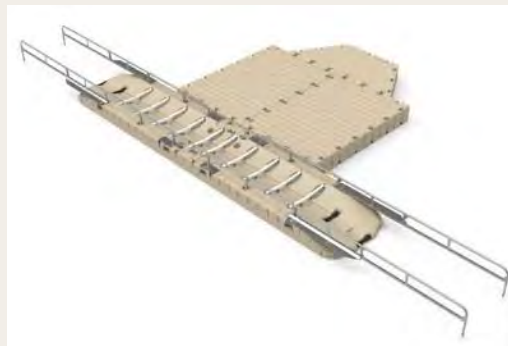
Title: Elevations
Pricing

Date: January 11 2023

Sht No: 1 of 1



Ocean Playgrounds
(Kentville, NS)



EZ Launch
Available from Eagle Beach Contractors
(Hammonds Plains, NS)

TRAIL IMPROVEMENTS + PLAYWAY



GNOME HOME

Cobequid
(Economy, NS)



KEY FEATURES

- Woodland creature carvings
- Mushroom carvings
- Stump furniture
- Interior mural
- Thatched roof
- Guest book

TREE SWING



KEY FEATURES

- Natural wood frame
- "Nest" swing

Cobequid
(Economy, NS)

LOG JAM



KEY FEATURES

- Natural wood logs
- Aligned with path
- Modest scale
- Keep existing mystery tunnel?

Cobequid
(Economy, NS)

Cobequid
(Economy, NS)

HAMMOCK GROVE



KEY FEATURES

- Log posts
- Waterproof/durable
- Locate close to water play area (for parents!)

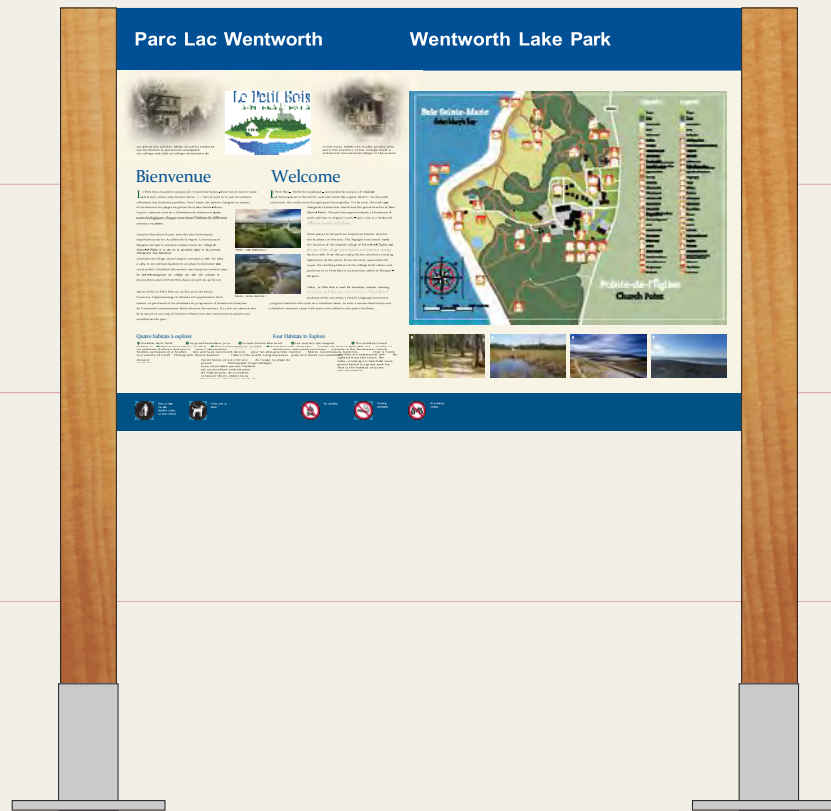
TRAILHEAD SIGNAGE



1.



2.



KEY FEATURES

- Entrance sign visible at posted speed (NIC)
- Welcome/wayfinding sign in focal location
- Scaled map with walking times
- **"You are here"** arrow
- Located with recycling station
- Coordinate colours of recycling station with washroom building
- Coordinate with signage strategy

3.



Total budget	\$285,155
ACOA	\$200,000
Municipality of Clare	\$71,555
CFA project	\$14,000 (Star gazing platform)

BUDGET DETAILS